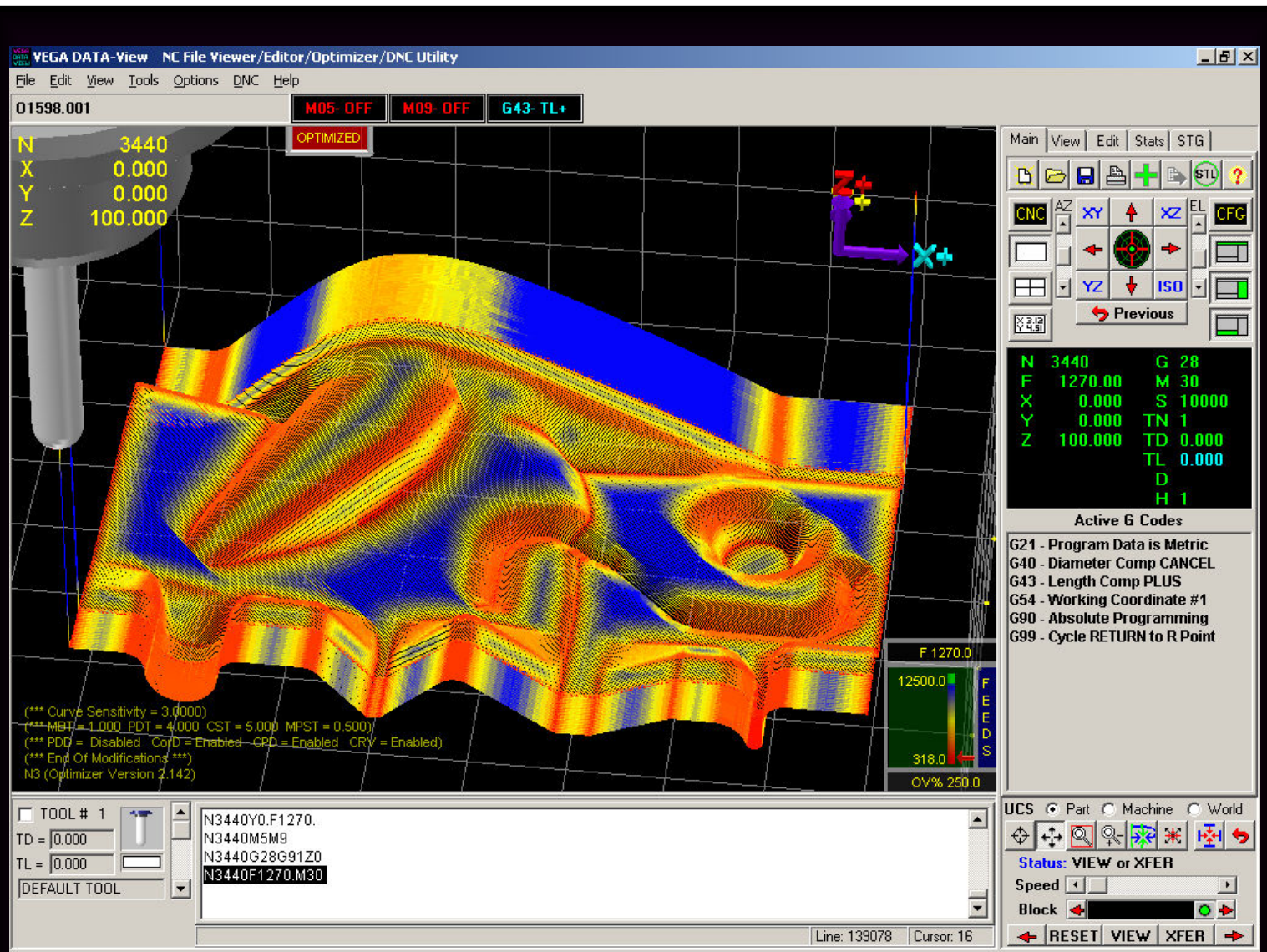


VEGA DATA-View

**THE FUTURE OF
HIGH SPEED MACHINING
HAS ARRIVED.....**



**NC File 3D Viewer, Editor, Verification,
DNC/MIU, Drip Feed, Back-Plotter, De-Post,
Data Converter, Machine/Flex-Cell Animator, and
HIGH SPEED DATA-Optimize**

**VISIT US ON
THE WEB AT
VEGACNC.COM**

DATA-View is FAST and EASY to Use

- Easy to Use Tools -

DATA-View has intuitive tools to provide a powerful link between man and machine. Viewing tools include:

- Pick-A-Line
- Dynamic Zoom
- Zoom Window
- Dynamic Rotation
- Pan
- Origin

- Operator Interface -

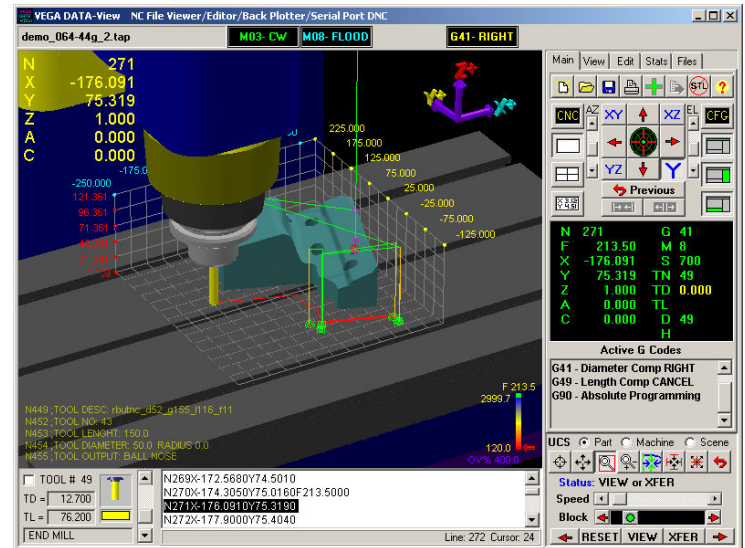
DATA-View is Intuitive, Interactive, easy to use and has handy At-A-Glance displays screens designed for the NC operator. See M & G codes displayed in a man readable format (No codes to decipher).

- AT A Glance Displays -

- Displays Modal/Active M and G codes
- Detailed Canned Cycle information
- Status Flags for Rapid, Spindle, Tool Change, Dwell, Canned Cycle, Tool Length/Diameter codes
- Heads-Up-Display including programmed messages, Modification Flags, and Feed-O-Meter
- Intuitive, Interactive, and easy to use

- Verify the NC File -

DATA-View allows you to verify the cutter path by processing the tool path as the CNC would. **DATA-View** executes all motion as well as Canned Cycles, M Codes, G Codes, Spindle Speeds, Tool Codes, and Feederates. See potential errors and surface violations before they end up on your part !!!



- View the NC File -

DATA-View allows you to view the NC data depending on your viewing needs. View your NC data by:

- By Feederates, Active Tool, and Executed Block
- By Region (Graphic display start point)
- By Z Level (Height Mapping)
- Unique M and G code Nodes for graphic display
- Overlay cutter path on top of your STL model

Advanced NC File Text Editor

- Syntax Highlighting NC File Editor -

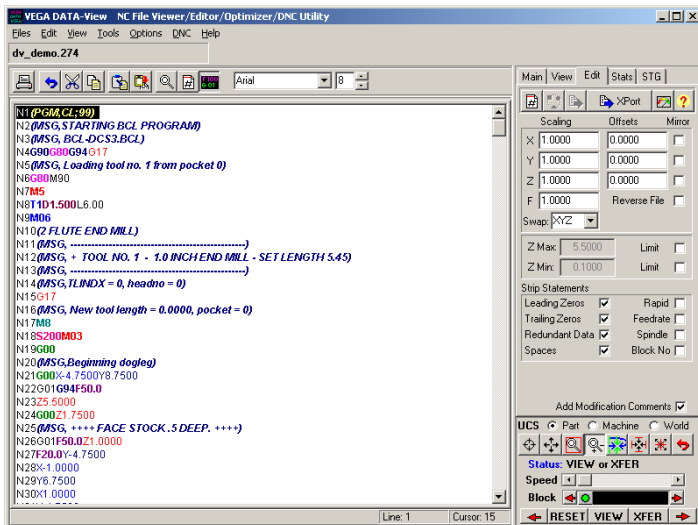
DATA-View advanced syntax highlighting editor is fast, powerful and easy to use.

- Syntax Highlighting for easy editing
- Cut, Copy, Paste, Paste Inverted (reversed)
- Search/Replace for text, Block Number, Position, Feederate, Spindle Speed, Tool Number, etc.
- Edit in Execution window or Full Screen edit modes
- Append files (Merge multiple files)
- Print NC files in color or black and white

- Built In Macros -

DATA-View comes fully equipped with built in macros. Use these macros to quickly and safely modify NC files.

- Individual Axis scaling, Mirroring, and Offsets
- Axis Interchange (Swap Axis)
- Reverse Entire File
- +/- Z Limits
- Strip Rapids, Feederates, and/or Spindle codes
- Strip Block Numbers, Spaces, Leading/Trailing zeros, and Redundant data
- Block Re-Number with increment and roll-over



- Linked Text and Graphic Display -

DATA-View has direct correlation between the graphic display and text window. Cursor to a location in the text window and the tool moves to the same location in the graphic display. Use **Pick-A-Line** to select a line or arc in the graphic window and the correlating text is highlighted.

DATA-Link Real Time DNC and Drip Feed

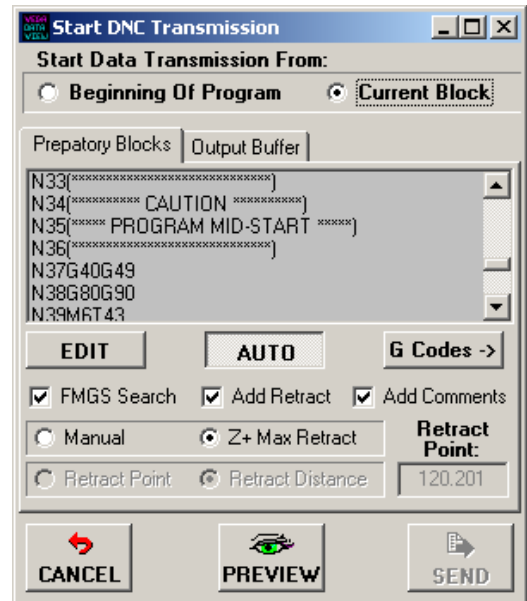
- DATA-Link Communications -

DATA-Link is a robust and easy to use DNC package. Sending and receiving data is as easy as pressing the XFER button!

- RS-232, RS-422, USB, or Fiber Optic
- Baud Rates from 1200 to 921,600
- Supports XON/XOFF, RTS/CTS and DSR/DTR handshaking protocols
- Supports packet protocols including XMODEM
- Drip Feed large files to your NC
- No File Size Limitations

- Point and Click Mid-Start -

DATA-Link allows you to start your download in the middle of the NC file. Use the **Pick-A-Line** tool to graphically select, or position the cursor in the text window to the desired start point. Press the 'XFER' button and let **DATA-View** do the rest.



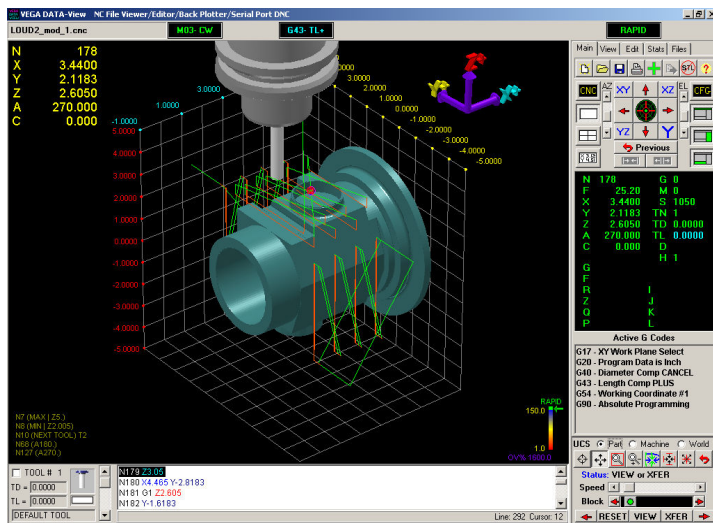
5 Axis Machining Made Easier

- DATA-View Supports 5 Axis Geometry -

DATA-View's 5 axis option takes the guesswork out of the complexities of 5 Axis machining. 5 Axis machining is tuff enough, machine operators needs every tool available to them when faced with complex rotary, tilt, pivoting axes and part indexers.

Reduce Costly Mistakes – There is a potential crash behind every tilt, rotation, pivot, and retract. Wouldn't you like to see them ahead of time?

Just one crash can ruin your whole day. 5 axis equipment is expensive and generally time consuming and difficult to repair. If you catch one mistake by using **DATA-View** you could save thousands of dollars and hours of downtime.



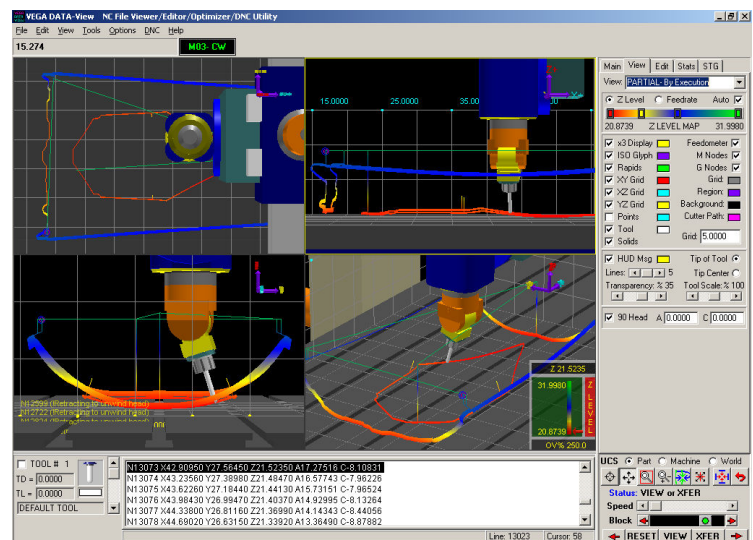
- Load NC/STL/APT/ACL/HPGL Data -

Load very **LARGE** files **FAST!** using **DATA-View**. 10-100 Meg files don't stand a chance with file loading rates as little as 1 second a Meg, you will be viewing and editing your data without delay!

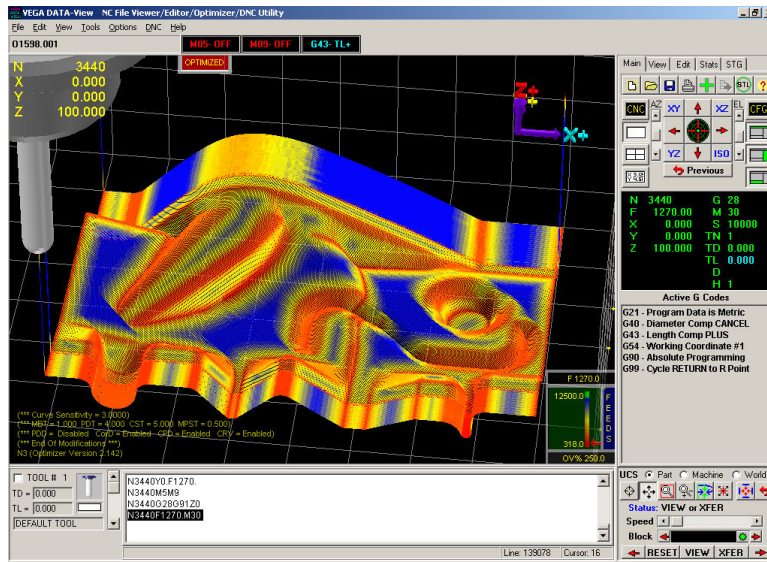
- Animate the NC File -

DATA-View allows you to animate your machining process. See your NC file executed in Real Time based on the programmed feedrates. Execute complex 5 Axis machine operations to see potential violations, gouges, and Collisions.

- Dynamic Animation of Feedrates with Over-Ride
- Use standard machine models or create your own
- Incorporate multiple STL and/or STL Group files
- 5 Axis Option supports A, B, and C Axis Rotations
- 5 Axis Option supports I, J, and K Tool Vectors



DATA-Optimize NC File Feedrate Optimization



- High Speed Machining with DATA-Optimization

Does your Haas, Fadal, or Fanuc make your machine walk across the floor when the feedrate is turned up?

Do your operators turn the feedrate down because your machine slams or overshoots in the corners or during direction reversals?

Does your machine stutter, jackhammer, and jerk when cutting complex/compound surfaces?

No more worry's about Look Ahead.... With **DATA-Optimize** consider your data **LOOKED AHEAD !!**

- DATA-Optimization -

DATA-Optimize is NOT based on material removal rates it was created to work with CAD systems to improve performance based on machine dynamics.

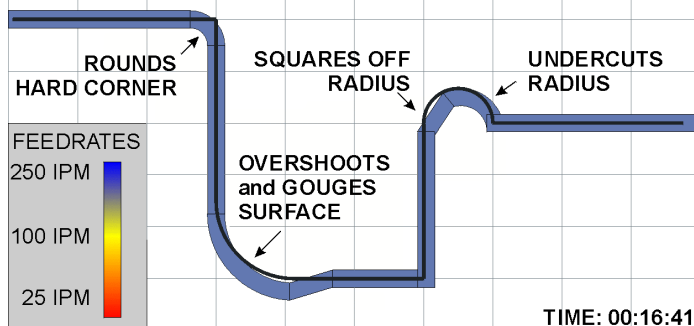
DATA-Optimize is a 3D Vector analyzing process that embeds acceleration and deceleration feedrates into the NC file based on mechanical dynamics of the machine and the block processing rate of the CNC.

DATA-Optimize is far more than just Look Ahead. Dramatically improve your production by making your machine run smoother and position more accurately. Even large machines move like graceful giants.

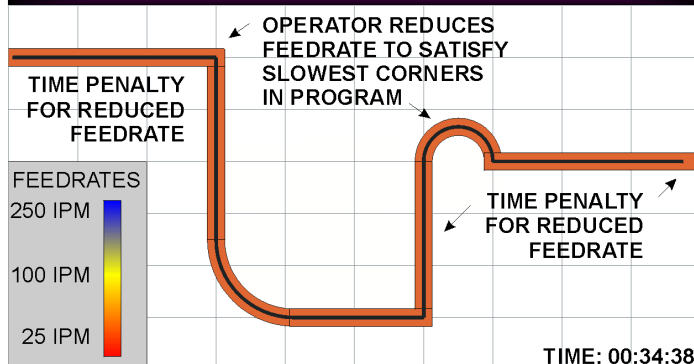
- No more hard stops
- Reduce benching time
- Reduce tool breakage, mechanical wear, machine banging and slamming
- Reduce over-shoot
- Reduce cutter deflection in corners
- Keep tight tolerance parts within tolerance
- Improve Surface Finish
- Finish parts at higher feedrates

View The Optimized Data –Pre-view the optimized data and see exactly where the acceleration and deceleration occurs. This dynamic representation of the machines execution feedrates says it all. **DATA-View's Adaptive** animation allows the user to see changes in tool velocity based on the NC file feedrates.

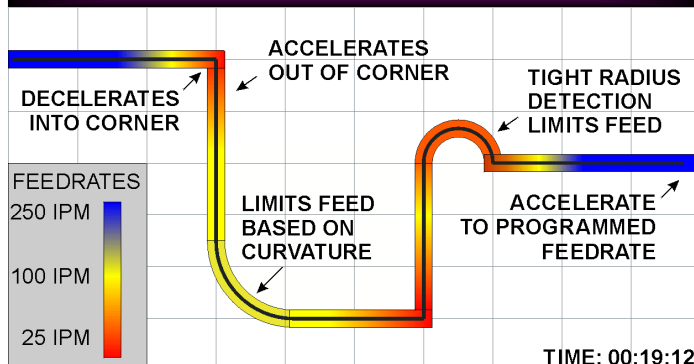
Don't Scrap a Part...



Stop Wasting Time...



DATA-Optimize!



- Pricing -

DATA-View Single Seat License	\$ 650.00
DATA-Link Option Module	\$ 325.00
DATA-View 5 Axis Option Module	\$ 1,250.00
DATA-Optimize Option Module	\$ 2,500.00